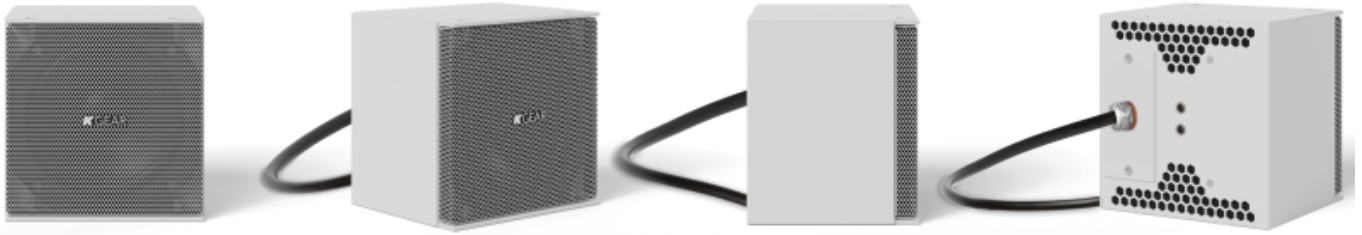


KGEAR GH4 & GH8 Marine



Part of the K-array ecosystem, KGEAR has announced the launch of GH4 Marine and GH8 Marine, new IP-rated versions of its popular ultra-compact point source, arrayable satellite loudspeakers, purposely designed for the marine market and other demanding outdoor environments. Building on the acoustic quality and sleek design of the original GH4, the GH4 Marine and GH8 Marine introduce new levels of durability and weather resistance to these crowd-pleasing products.

The GH4 Marine features a 4-inch full-range driver with a dual-coil neodymium magnet, housed in a corrosion-resistant stainless steel enclosure. Its 16Ω impedance makes the loudspeaker adaptable to a wide variety of system configurations, offering integrators and sound designers greater flexibility. KGEAR's signature cabinet design ensures highly controlled audio dispersion, particularly useful in open-air or reflective marine environments.

The GH8 Marine inherits the acoustic principles of the GH4 but in a larger format. It features an 8-inch full-range driver with a dual-cone design, housed in a robust stainless steel enclosure that withstands even the harshest conditions. Its cardioid dispersion pattern ensures lower emission on the backside of the speaker, improving control, preventing energy loss and residual noise. With an impressive 129dB SPL per unit and IP65 protection, GH8 Marine is engineered to deliver powerful and clear sound, even in challenging acoustic and environmental settings.

With the GH4 Marine and GH8 Marine, users can expect clear, consistent sound performance, even when faced with the challenges posed on deck. Designed to operate in all weathers, the new GH4 and GH8 Marine's IP65 rating protect them from water, dust and salt, making them ideal solutions for outdoor settings. "The marine and outdoor markets demand a unique balance of performance and elegance," says Lorenzo De Poi, Brand Manager at K-array. "With GH4 Marine and now GH8 Marine, we've taken our proven audio technology and engineered it to excel in demanding environments such as the marine and outdoor residential market, where durability and design go hand in hand."

The original GH line has already earned a reputation for its versatility. In refined restaurants like Muse Monte Carlo, multipurpose hospitality spaces such as Mediterraneo in Nice, and heritage attractions like Nanxun Ancient Town in China, GH series loudspeakers have proven their worth as a trusted ally for integration in

dynamic and design-driven environments worldwide.

Now available to order, the new GH4 Marine and GH8 Marine versions extend this legacy, bringing KGEAR's audio innovations to maritime spaces where performance and protection from the elements are equally important. New marine-grade accessories, including the K-WALL2LMINI Marine and a ground stake, provide a variety of rigging options. "There's a growing demand for audio systems that deliver premium sound without disrupting the aesthetics of high-end spaces," continues De Poi. "GH4 Marine and GH8 Marine answer that call, offering reliability, exceptional flexibility and high-performance audio that stands up to even the harshest conditions."

www.kgear.it