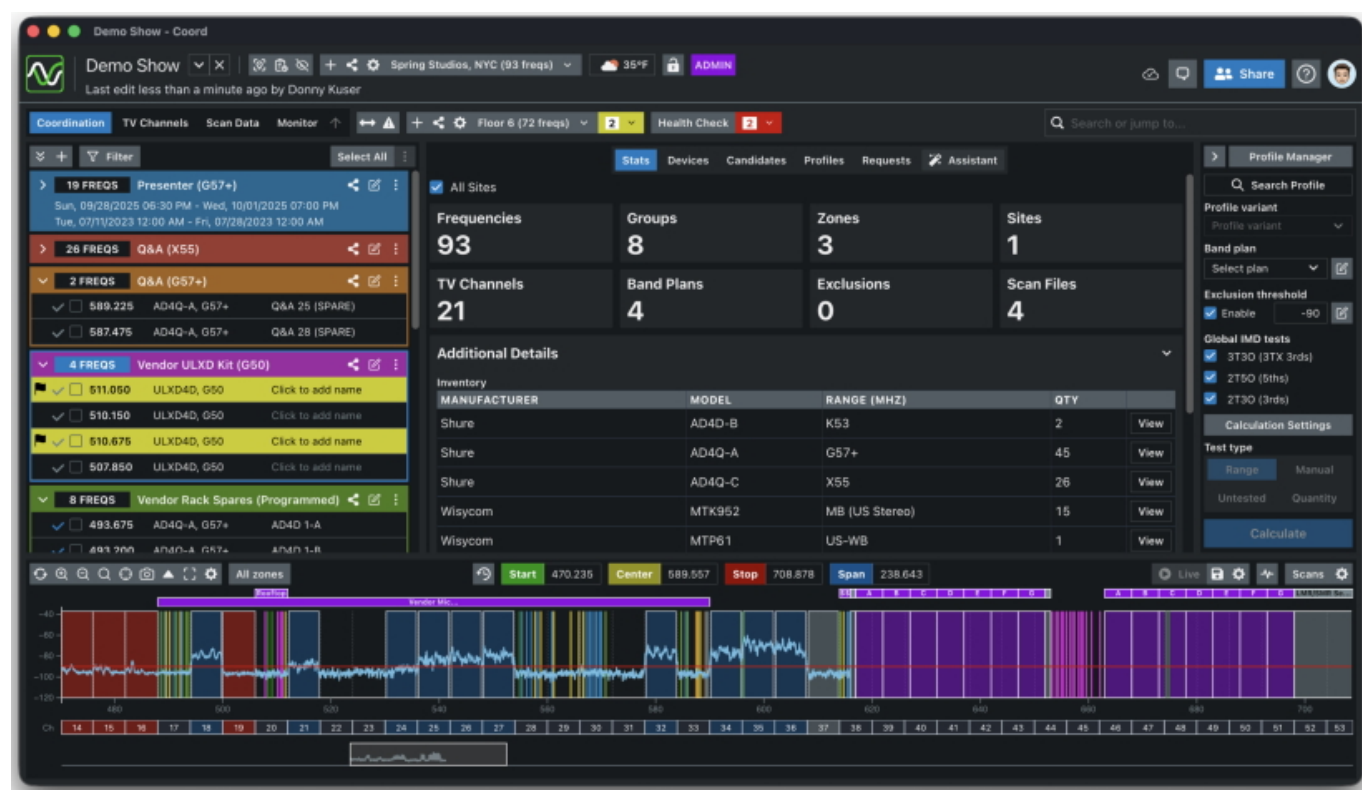


SoundBase App



Today, the usual sight behind the scenes of a live audio production is the RF manager or monitor engineer having to handle multiple software tools to coordinate and set up a production's wireless microphones and monitors, brand by brand - a tedious and cumbersome job. The SoundBase app has set out to change this, allowing sound professionals to plan, organize and communicate all audio projects effortlessly in one shared space. At ISE 2026, SoundBase is proudly unveiling an extension to the feature set of its free version: It now includes real-time control of one manufacturer's wireless per project, a function that was previously reserved exclusively to the Pro version of the app.

Since audio veterans Matt Dale and Donny Kuser developed SoundBase in 2020, the

app has rapidly become the go-to solution for wireless coordination and production management, and the platform's quick adoption showcases the industry's demand for better tools that address the fragmented workflow challenges that have long plagued the live sound industry. "Before SoundBase, audio teams were juggling multiple manufacturer-specific applications, spreadsheets, and PDFs across disparate systems," says Dale. "We've unified these critical functions into one intuitive platform that allows professionals to focus on what matters most - delivering flawless live sound experiences."

"In time for ISE 2026, the world's biggest AV show, we are rolling out our new business model," adds Kuser. "The free SoundBase SE version gives engineers free, per-project real-time control of one manufacturer's networked devices - the same hands-on device control that used to require Pro - while SoundBase Pro remains the multi-vendor powerhouse for rental houses and large productions."

Currently supported is control for select wireless devices from Shure, Wisycom, Sound Devices and Sennheiser, with more manufacturers and more devices to be added in future. SoundBase works with wireless systems from every major manufacturer, providing the audio team with a single, time-saving and efficient workflow. The free SE version now gives engineers real-time control of one manufacturer's networked devices per project

SoundBase SE has the widest functionality of any free RF planning app. Compatible with wireless audio systems from twenty major manufacturers, SoundBase SE ensures streamlined RF planning and efficient project management in a single tool, eliminating the need to switch between multiple applications, particularly during critical production moments. Also, engineers no longer need to keep trained and updated on the manufacturers' individual software tools.

What is more, SoundBase SE includes full control of one manufacturer's wireless devices per project with the desktop app, meaning that operators can switch their manufacturer brand of choice from production to production. The cloud-based access for SoundBase SE users allows to operate from any device with a modern web browser; any changes are automatically sync'ed so that everybody on a production team always has the up-to-date version at hand. To give audio teams a good starting point for their production planning, SoundBase provides a crowd-sourced database of previous spectrum use in an area, which is visualized on interactive maps.

SoundBase enables real-time collaboration where entire teams can coordinate remotely - a capability that is essential as productions increasingly span multiple locations. Edits to an audio project are automatically saved and shared with the team, and messaging can happen directly in the app. Collaboration continues beyond the production's own audio team: For sharing between different productions, for example in an entertainment district, SoundBase provides real-time reports with unique static links that will automatically update as collaborators edit.

In future, SoundBase will expand its offering beyond wireless coordination to create an even more comprehensive ecosystem for live sound production, including forthcoming modules for A1/A2 mixers, stage plotting and production scheduling. The SoundBase Pro app offers all of the SE features, and much more. The ideal choice for rental fleets and large tours, it provides the operator with mixed manufacturer control (Shure, Wisycom, Sound Devices and Sennheiser), advanced project management and premium support.

Perhaps most importantly, SoundBase continues to evolve through active community input, with new features regularly developed and deployed based on direct feedback from its thriving Discord community of over 3000 members. “We’re sound people at heart. We know the struggles and pain points of our industry, so we're building tools for people like us,” explains Kuser. “We’re not just developing software for users; we’re building it with them. That’s what makes SoundBase different.”

www.soundbase.app