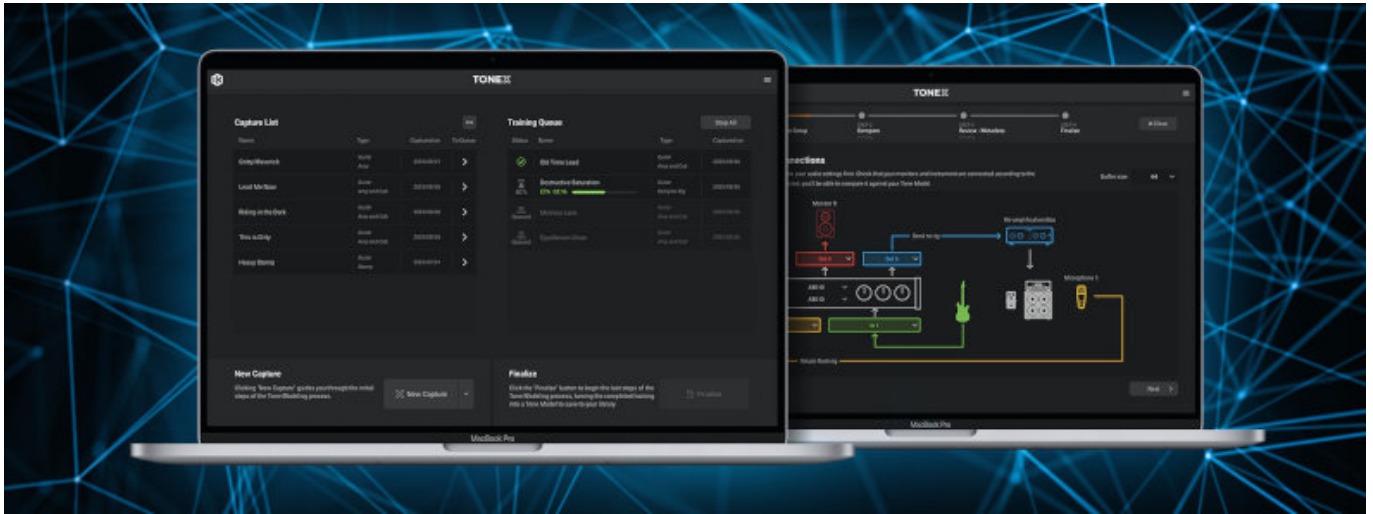


## IK Multimedia TONEX Modeler



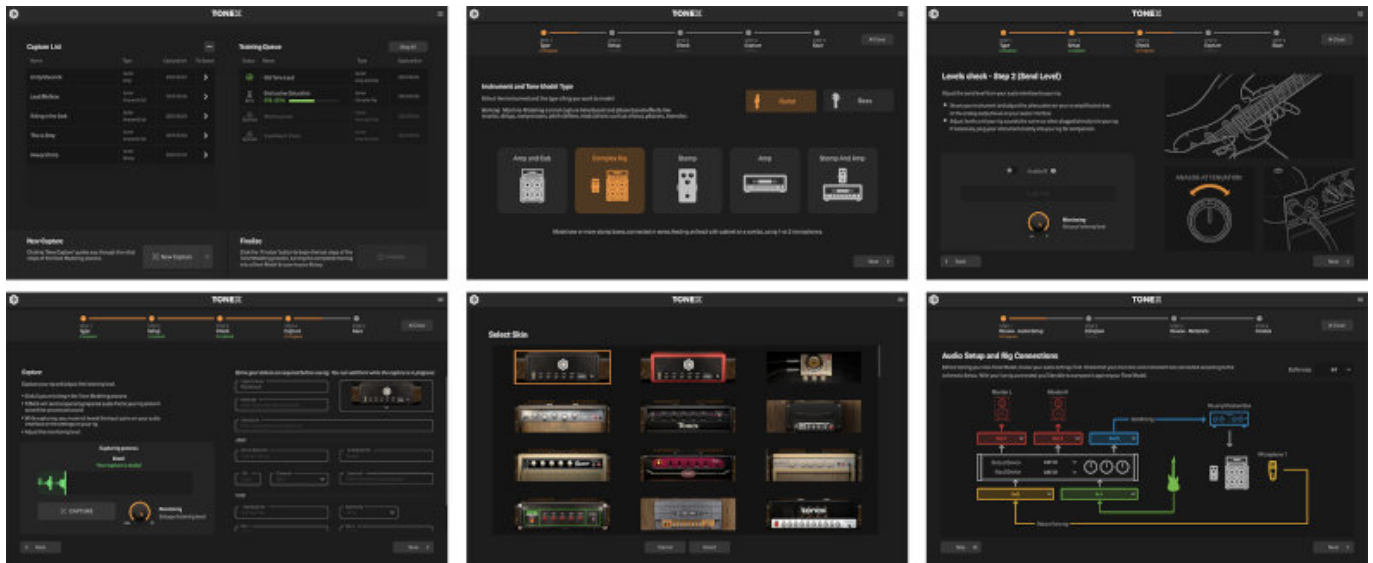
IK Multimedia announces the launch of the new TONEX Modeler, a FREE update for all paid versions of TONEX, available today through the IK Product Manager as TONEX 1.10.0. Developed by IK's dedicated TONEX team, TONEX Modeler offers a variety of requested improvements and works seamlessly with TONEX software, ToneNET, and TONEX hardware, whether for capturing and creating Tone Models or performing live with more accurate and expressive Tone Models.

### TONEX Modeler Overview

- **Faster Training:** Up to 87% quicker on modern GPUs and Apple Silicon Macs, with training times as short as 2 minutes.
- **Extreme Tone Accuracy:** Ultra-dynamic with harmonic clarity for high-gain amps.
- **Batch Processing:** Capture multiple rigs in a single session, then train later, even on another machine.
- **Time-Saving Workflow:** TONEX Modeler automatically stops training once the ideal results are achieved.
- **Phase-Perfect Captures:** Stereo rigs and DI blends remain perfectly aligned, essential for live performance.
- **Ultra-Low Latency:** Play with a natural, responsive feel both in the studio and on stage.
- **Portable & Organized:** Archive, export, and transfer captures easily across devices.
- **Seamless TONEX Integration:** Instantly load new models into TONEX and TONEX Editor.

Every Tone Model produced by TONEX Modeler is phase-perfect and features ultra-low latency, ensuring that stereo rigs and bass DI blends sound flawless without requiring additional tweaks. The new capture engine also excels with high-gain tones, delivering tighter lows, richer harmonics, and crystal-clear definition-perfect

for modern guitarists and producers who demand mix-ready sound straight from the capture.



TONEX Modeler's batch processing removes guesswork, saves time, and lets users capture once and process anytime, with the heavy lifting done automatically. Designed for today's creators, it works smoothly with NVIDIA GPUs and Apple Silicon Macs, providing faster and more reliable performance. Its smart workflow even stops training early once peak quality is reached, so there's less waiting and more creating.

TONEX Tone Partners are experts whose feedback was crucial in developing the new TONEX Modeler. They received early access, and today IK is excited to share the results of this collaboration. Fifty-six new Tone Partner collections and bundles are now available on ToneNET for demo and purchase, showcasing the sonic enhancements of the new TONEX Modeler and providing over 1,140 new Premium Tone Models of sought-after rigs to explore.

The TONEX Modeler is now available through the IK Product Manager as a FREE update for all paid versions of TONEX, including TONEX SE. TONEX Tone Partner Collections, created with the new TONEX Modeler, are now available for demo and purchase through ToneNET and in any version of TONEX for Mac/PC with Tone Partner bundles.

[www.ikmultimedia.com/](http://www.ikmultimedia.com/)